

JOHN NOOTT GALLERIES

BROADWAY MODERN



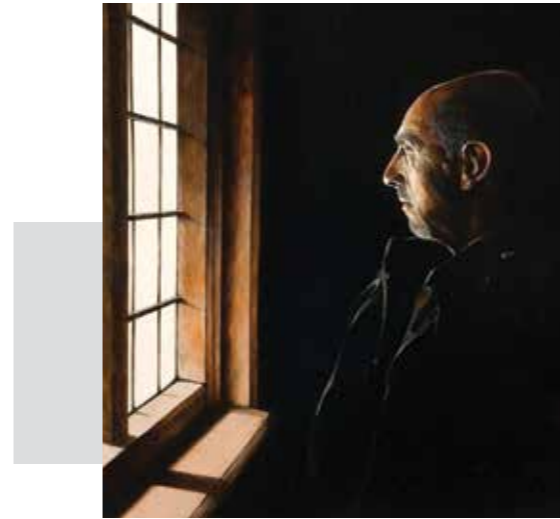
# RON BONE

## A RETROSPECTIVE

12th April - 26th April 2014



Room at Court Farm – 2008 16x14 inches acrylics



## RON BONE

1950 – 2011

12th April – 26th April 2014

The Directors of John Noott Galleries and Maggie, Harriet and Josh Bone Cordially invite you to view the Ron Bone Retrospective Exhibition Opening on Saturday 12th April 2014. 11 am – 5pm. Champagne will be served.

The work illustrated herein is for sale upon receipt of this catalogue. Full details plus further work not illustrated in the catalogue can be viewed on our website at [www.john-noott.com](http://www.john-noott.com). Also included in the exhibition will be a collection of work painted over the last 20 years or so which will not be for sale. The exhibition runs until Sunday 26th April.

*I had the honour of working with Ron for over twenty years. His annual exhibitions were often sell-outs and the quality of work that he produced and the changing subject matter never failed to thrill me. He moved with the times – never standing still – painting better and better work. Ron would never attend one of his openings .... I tried very hard to persuade him, trying to convince him that our customers were 'a lovely lot'. But no, he remained steadfastly obstinate to the end! The only clients that ever got to actually meet him would have happened to bump into him on a day that he was delivering work for an exhibition. I did have some customers who were convinced that he never actually existed! He was always charming, self deprecating and very funny. A dry Northern wit. And very clever. A man who loved his family but for whom painting (and music) was his passion. When we agreed the date of an exhibition, I used to try to specify the number of paintings that I would like to exhibit. After a number of years, this became a standing joke. He would turn up with however many he had painted – whether that be 10 or 25. He could also be incredibly frustrating! But we always laughed. I miss him.*

Amanda Noott

*Ron Bone could paint the ticking of a clock in an empty room, the creak of a floor joist settling on a warm day or the flutter of a curtain in a draught through an old window frame. He didn't actually paint any of these sounds or movements of course but they are here in these beautiful studies, waiting for the viewer's mind to find them.*

*Regulars will not be surprised; John Noott Galleries have been a window on Ron's work since 1991 and it is fitting that his two decades of one-man shows have been revived with this exhibition. He died of cancer three years ago but the power of memory keeps him alive for those lucky to have known him. The paintings make those memories available for everyone.*

*Ron had a kind and curious-minded nature. He studied the surroundings of daily life intently and was able to reproduce them with highly detailed accuracy, the result of childhood talent given rigour by Bath Academy of Art and the Royal College. That can kill a painting if it becomes photographic, but look for Ron's extra dimension; the calm serenity he studied in the Dutch masters whom he so much admired and quietly acknowledged. Fabritius' Goldfinch wasn't a cultural celebrity in 2009 when Ron painted his swallow.*

*The peaceful interiors, even those without a door or window in sight, also have a further sense: that just out-of-frame is the bustling, unquiet outside world in which Ron was ever busy. Family engaged him above all but he plunged into many enthusiasms: record sleeve design for Top Ten musicians, guitar restoration for George Harrison and making longbows. In learning to master the last he became Somerset's champion longbow archer. Persistence and quality were his hallmarks.*

Martin Wainwright

Northern Editor, *The Guardian* 1995-2013



Dutch interior - 2005 18x14 inches acrylics



In the State Room - 2010 18.5x16 inches acrylics



Chair by the window - 2009 18x14 inches acrylics



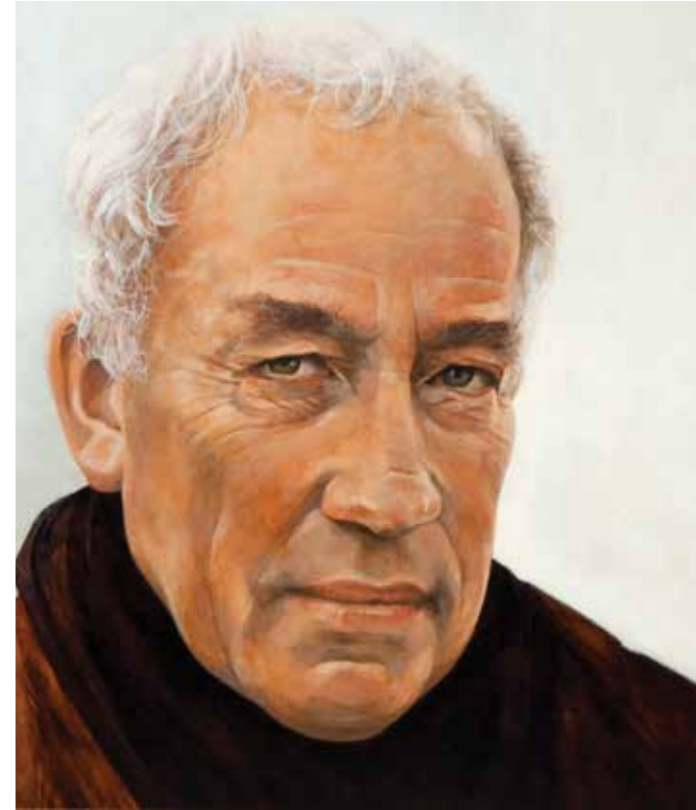
From the East - 2008  
16x25 inches acrylics



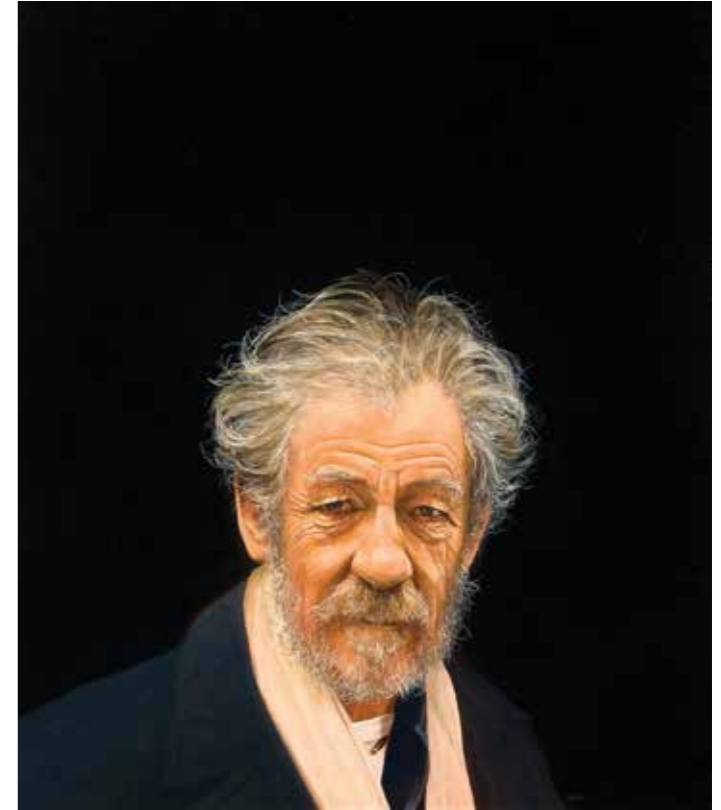
Gondolas - 2009 18x15 inches acrylics



The gatherer - 2009 20x15 inches acrylics



Simon Callow - 2009 10x8.5 inches acrylics



Sir Ian McKellen - 2010 18x16.5 inches acrylics



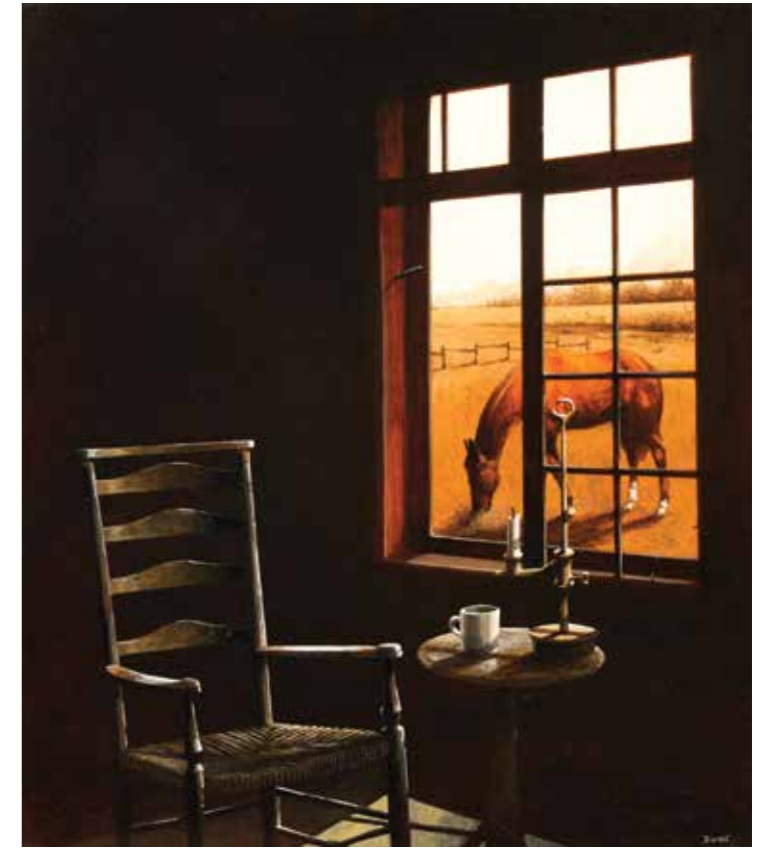
Private apartment - 2008 16x17 inches acrylics



Light on chair back - 2007 15.5x15.5 inches acrylics



Painted cupboard - 2008 17x18 inches acrylics



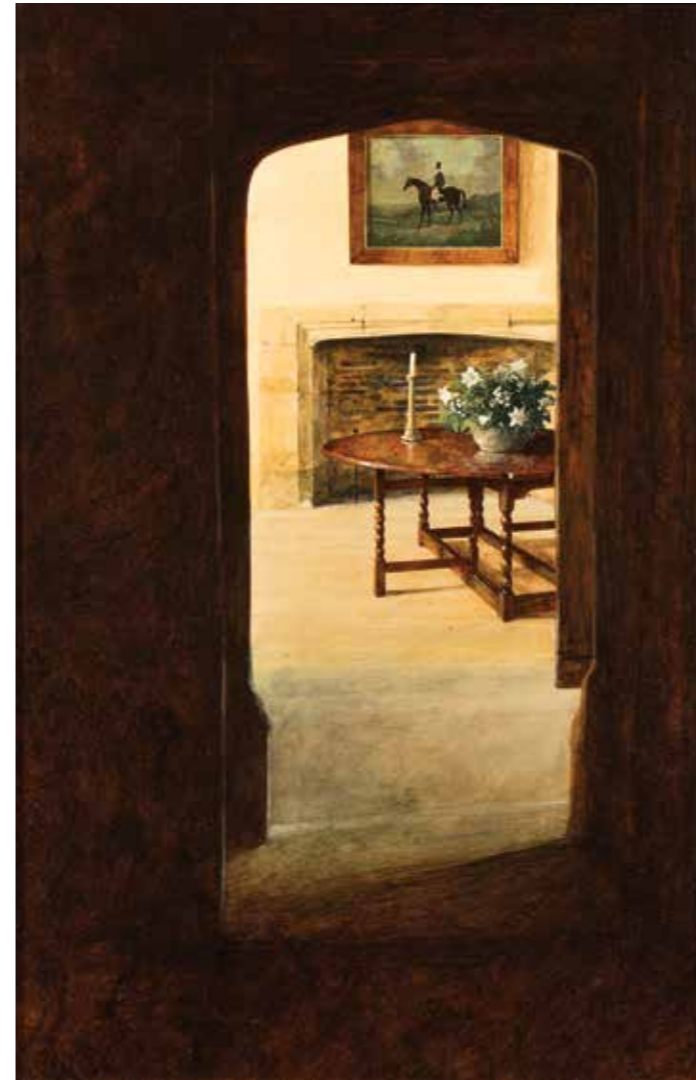
View of the paddock - 2006 18x16 inches acrylics



Back on the shelf I - 1996 11.5x10 inches acrylics



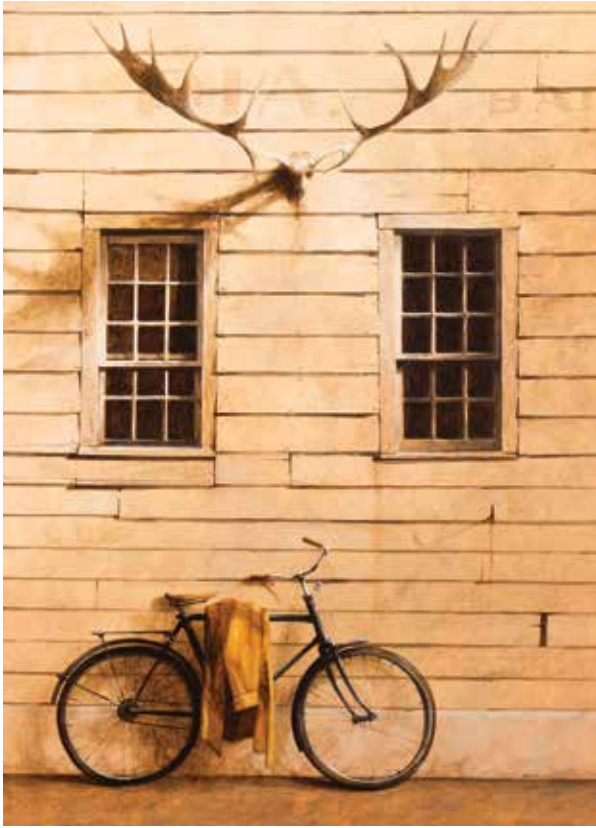
Back on the shelf II - 1996 11.5x10 inches acrylics



Sturminster Manor - 1995 20x13 inches acrylics



Painted Armoire - 1997 15x12 inches acrylics



**Bicycle - 2009** 19x14 inches **acrylics**



**Carved trunk - 2008** 16,5x14,5 inches **acrylics**

Front cover: Winner in show - 2009 17,5x18 inches **acrylics**

GALLERY OPEN DAILY:

Monday - Saturday: 9.30am - 1pm and 2pm - 5pm,

Sunday: 11am - 4pm

**Broadway Modern**

10 The Green, Broadway, Worcestershire WR12 7AA

01386 85 89 69 | [bm@john-noott.com](mailto:bm@john-noott.com)

[www.john-noott.com](http://www.john-noott.com)



**Own Art making art affordable**